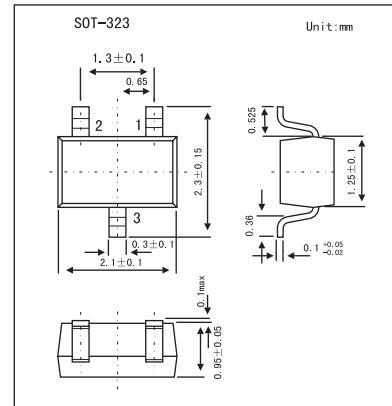


HIGH SWITCHING DIODE

1SS378

■ Features

- Low forward voltage: $V_{F(3)} = 0.23 \text{ V(Typ)}$ @ $I_F = 5 \text{ mA}$

■ Absolute Maximum Ratings $T_a = 25^\circ\text{C}$

Parameter	Symbol	Rating	Unit
Maximum (peak) reverse voltage	V_{RM}	85	V
Reverse voltage	V_R	80	V
Maximum (peak) forward current	I_{FM}	300(*)	mA
Average forward Current	I_o	100(*)	mA
Surge current (10 ms)	I_{FSM}	2(*)	A
Power dissipation	P	100	mW
Junction Temperature	T_j	125	$^\circ\text{C}$
Storage Temperature range	T_{stg}	-55 to +125	$^\circ\text{C}$
Operating temperature range	T_{opr}	-40 to +100	$^\circ\text{C}$

(*) Unit rating. Total rating = Unit rating \times 1.5

■ Electrical Characteristics $T_a = 25^\circ\text{C}$

Parameter	Symbol	Test Conditions	Min	Typ	Max	Unit
Forward voltage	$V_{F(1)}$	$I_F = 1 \text{ mA}$		0.18		V
	$V_{F(2)}$	$I_F = 5 \text{ mA}$		0.23	0.3	
	$V_{F(3)}$	$I_F = 100 \text{ mA}$		0.35	0.5	
	I_R	$V_R = 10 \text{ V}$			20	μA
Total capacitance	C_t	$V_R = 0, f = 1.0 \text{ MHz}$		20	40	pF

■ Marking

Marking	O9
---------	----